

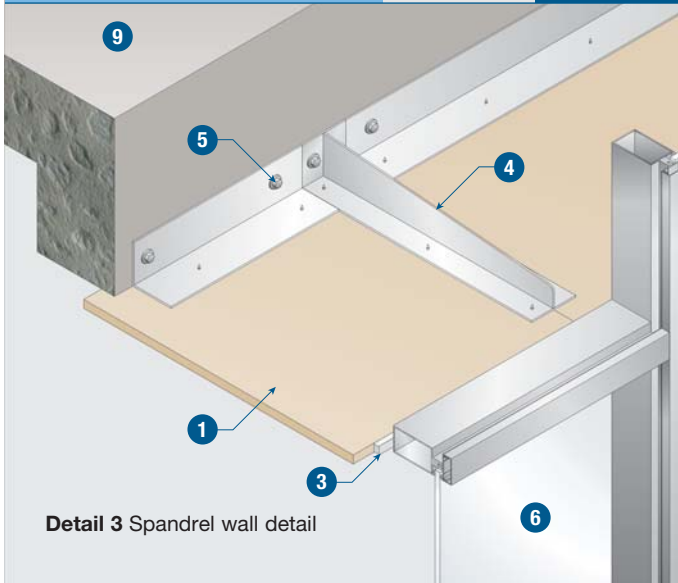
Detail 1 Vertical section through parapets and spandrel walls

PH 72



Detail 2 Parapets wall detail

PH 71



Detail 3 Spandrel wall detail

TECHNICAL DATA

2 hours fire rating, integrity in accordance with the criteria of BS 476: Part 22 for fire from either side, in the form of either a downstand or an upstand from a concrete floor slab.

- 1 PROMATECT®-H boards, 9mm thick
- 2 PROMATECT®-H boards, 9mm thick
- 3 Smoke seal filled with PROMASEAL® Acrylic Sealant
- 4 Steel spandrel bracket at 1220mm centres to coincide with butt joints
- 5 M8 metal anchor
- 6 External curtain wall panel system
- 7 M4 self-tapping screws at nominal 200mm centres
- 8 Window sill (aluminium, timber or other decorative material)
- 9 Fire rated floor slab

NOTE: For construction details of vertical barriers projecting down from the underside of the substrate, please contact Promat Technical Department.